



9740LF/9741LF/9748LF/9871LF/9872LF/9890LF/9894LF SOCKETS FOR RO POWER MODULES PRODUCT DATA SHEET

RO offers accessory sockets for all pin sizes encountered on our modular power conversion products.

Sockets offer a manufacturing option to soldering for example in high density applications which require through hole devices mounted on opposite sides of the CCA. They are also a handy accessory when prototyping or building test fixtures.

Part numbers 9871LF, 9872LF and 9894LF are semi-custom parts manufactured for RO by Hypertronics Corporation. These high quality sockets utilize Hypertronics hyperboloid contact technology and feature ultra low resistance values and high current carrying capacity as well as very low insertion and extraction forces and immunity to shock and vibration.



All RO socket part numbers ending in suffix LF are nickel gold plated. They are suitable for high reliability applications where pure tin finishes are prohibited and for lead free ROHS compliant applications as well.

All RO socket part numbers ending in suffix LF are nickel gold plated. They are suitable for high reliability applications where pure tin finishes are prohibited and for lead free ROHS compliant applications as well.

ORDERING INFORMATION:

PART #	DESCRIPTION
9740LF	SOCKET FOR 0.060 IN. DIAMETER PIN
9741LF	SOCKET FOR 0.025 IN. SQUARE PIN
9748LF	SOCKET FOR 0.080 IN. DIAMETER PIN
9871LF	SOCKET FOR 0.040 IN. DIAMETER PIN
9872LF	SOCKET FOR 0.138 IN. DIAMETER PIN
9890LF	SOCKET FOR 0.040 IN. DIAMETER PIN
9894LF	SOCKET FOR 0.098 IN. DIAMETER PIN



Astrodyne Corporation PH: 800-823-8082 FX: 508-339-0375 Email: sales@astrodyne.com

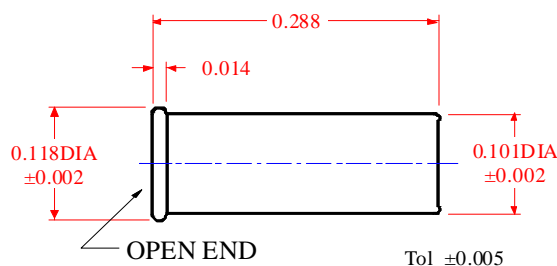
www.astrodyne.com

www.roassoc.com

9740LF/9741LF/9748LF/9871LF/9872LF/9890LF/9894LF SOCKETS FOR RO POWER MODULES

9740LF SOCKET FOR 0.060 IN. DIAMETER PIN

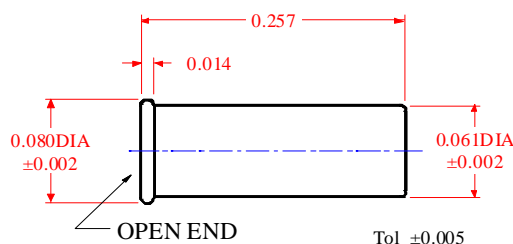
Parameter	Description
Socket type:	Miniature Spring Socket
Manufacturer:	Amp/Tyco
Manuf. Part #	2-50871-2
Contact Resistance:	< 15 mΩ
Insert/ Extract Force:	min 0.5 oz., max 56 oz.
Internal Hole Depth:	0.275 in min.
PCB Hole Size:	0.105 ±0.002
Materials:	copper (body), Beryllium copper (spring)
Plating:	Gold over nickel (body and spring)



RO Socket # 9740LF Mechanical Dimensions

9741LF SOCKET FOR 0.025 IN. SQUARE PIN

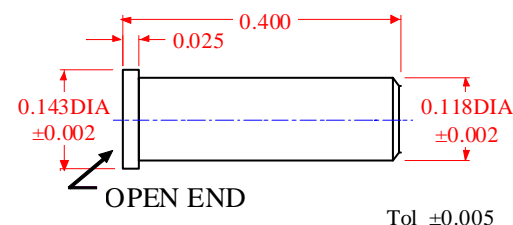
Parameter	Description
Socket type:	Miniature Spring Socket
Manufacturer:	Amp/Tyco
Manuf. Part #	50864
Contact Resistance:	< 15 mΩ
Insert/ Extract Force:	min 0.5 oz., max 56 oz.
Internal Hole Depth:	0.244 in min.
PCB Hole Size:	0.065 ±0.002
Materials:	copper (body), Beryllium copper (spring)
Plating:	Gold over nickel (body and spring)



RO Socket # 9741LF Mechanical Dimensions

9748LF SOCKET FOR 0.080 IN. DIAMETER PIN

Parameter	Description
Socket type:	Finger Contact Socket
Manufacturer:	Mill-Max
Manuf. Part #	0394-0-15-15-07-27-10-0
Contact Resistance:	<10 mΩ
Extraction Force:	typ 7 oz.
Internal Hole Depth:	0.352 in min.
PCB Hole Size:	0.122 ±0.002
Materials:	Brass #360, 1/2H (body), Beryllium copper (spring)
Plating:	Gold over nickel (body and spring)

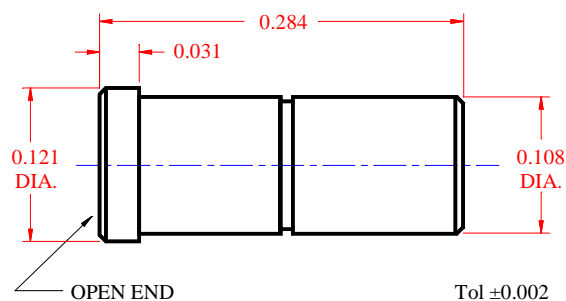


RO Socket # 9748LF Mechanical Dimensions

9740LF/9741LF/9748LF/9871LF/9872LF/9890LF/9894LF SOCKETS FOR RO POWER MODULES

9871LF SOCKET FOR 0.040 IN. DIAMETER PIN

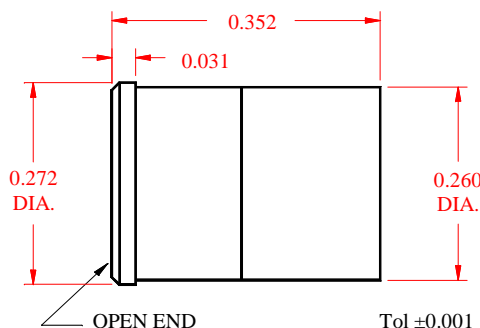
Parameter	Description
Socket type:	Hyperboloid Contact Socket
Manufacturer:	Hypertronics
Manuf. Part #	YSK0102-004AH
Contact Resistance:	< 2.5 mΩ
Insert/ Extract Force:	min 1 oz., max 3.9 oz.
Internal Hole Depth:	0.240 in min.
PCB Hole Size:	0.110 ±0.002 in
Materials:	brass (body), Beryllium copper (wires)
Plating:	Gold over nickel (body), gold over nickel (wires)



RO Socket # 9871LF Mechanical Dimensions

9872LF SOCKET FOR 0.138 IN. DIAMETER PIN

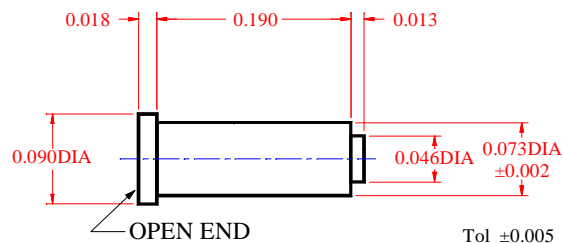
Parameter	Description
Socket type:	Hyperboloid Contact Socket
Manufacturer:	Hypertronics
Manuf. Part #	Per RO Drawing
Contact Resistance:	< 0.5 mΩ
Insert/ Extract Force:	min 7 oz., max 32 oz.
Internal Hole Depth:	0.319 in min.
PCB Hole Size:	0.265 ±0.002 in
Materials:	brass (body), Beryllium copper (wires)
Plating:	Gold over nickel (body), gold over nickel (wires)



RO Socket # 9872LF Mechanical Dimensions

9890LF SOCKET FOR 0.040 IN. DIAMETER PIN

Parameter	Description
Socket type:	Spring Contact Socket – Knockout Bottom
Manufacturer:	Cambion
Manuf. Part #	450-3716-01-03-00
Contact Resistance:	1.0 mΩ
Extraction Force:	min 6 oz., max 20 oz.
Internal Hole Depth:	0.190 in min.
PCB Hole Size:	0.076 +0.002, -0.001 in
Materials:	Copper (body), Beryllium copper (spring)
Plating:	Gold over nickel (body and spring)

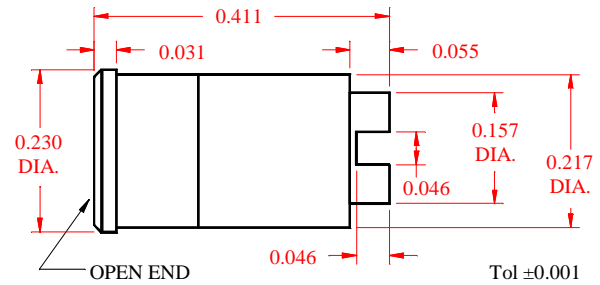


RO Socket # 9890LF Mechanical Dimensions

9740LF/9741LF/9748LF/9871LF/9872LF/9890LF/9894LF SOCKETS FOR RO POWER MODULES

9894LF SOCKET FOR 0.098 IN. DIAMETER PIN

Parameter	Description
Socket type:	Hyperboloid Contact Socket
Manufacturer:	Hypertronics
Manuf. Part #	Per RO Drawing
Contact Resistance:	< 0.8 mΩ
Extraction Force:	min 6 oz., max 25 oz.
Internal Hole Depth:	0.319 in min.
PCB Hole Size:	0.221 ±0.002 in
Materials:	Brass (body), Beryllium copper (wires)
Plating:	Gold over nickel (body), gold over nickel (wires)

**RO Socket # 9894LF Mechanical Dimensions**